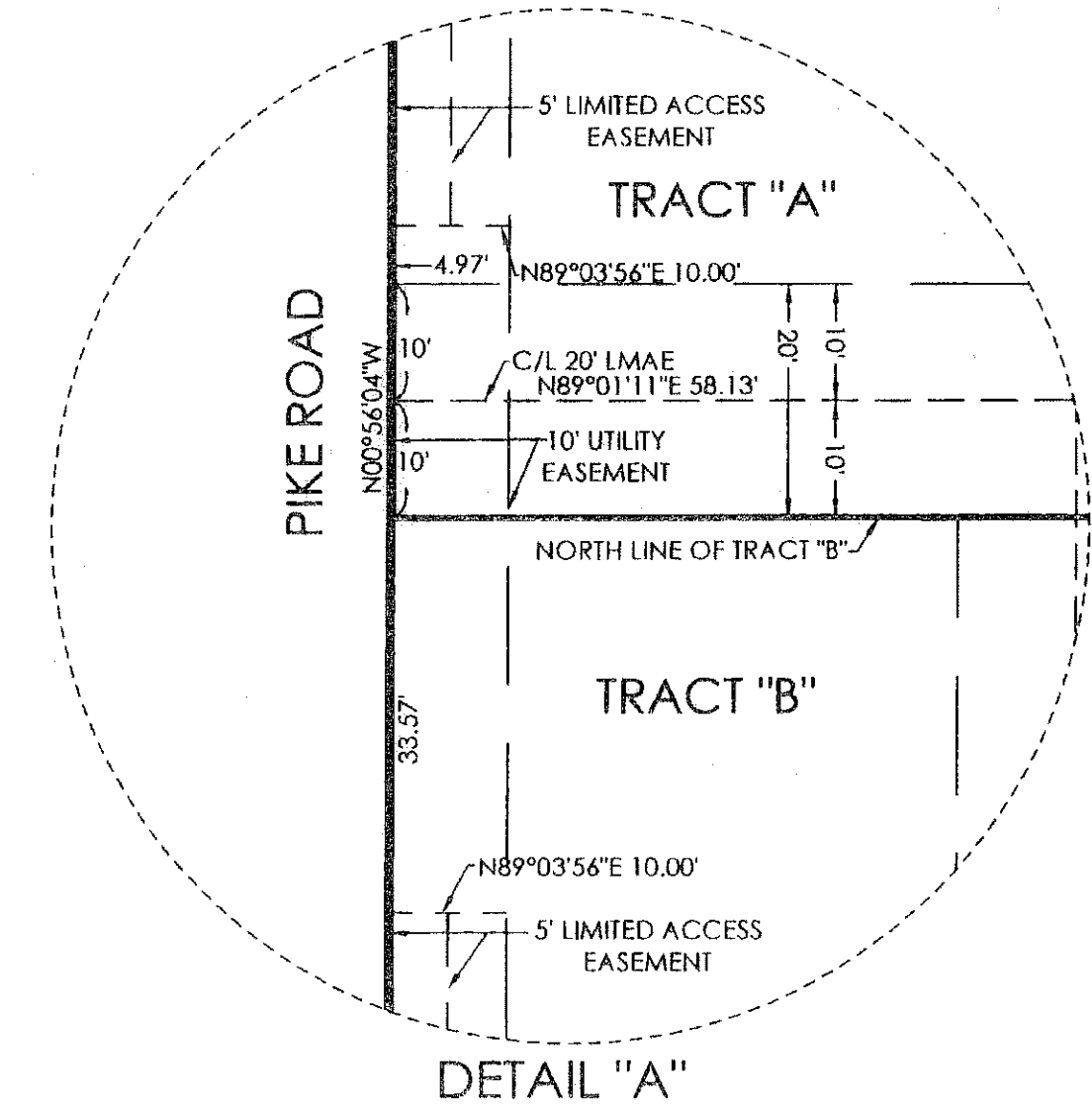
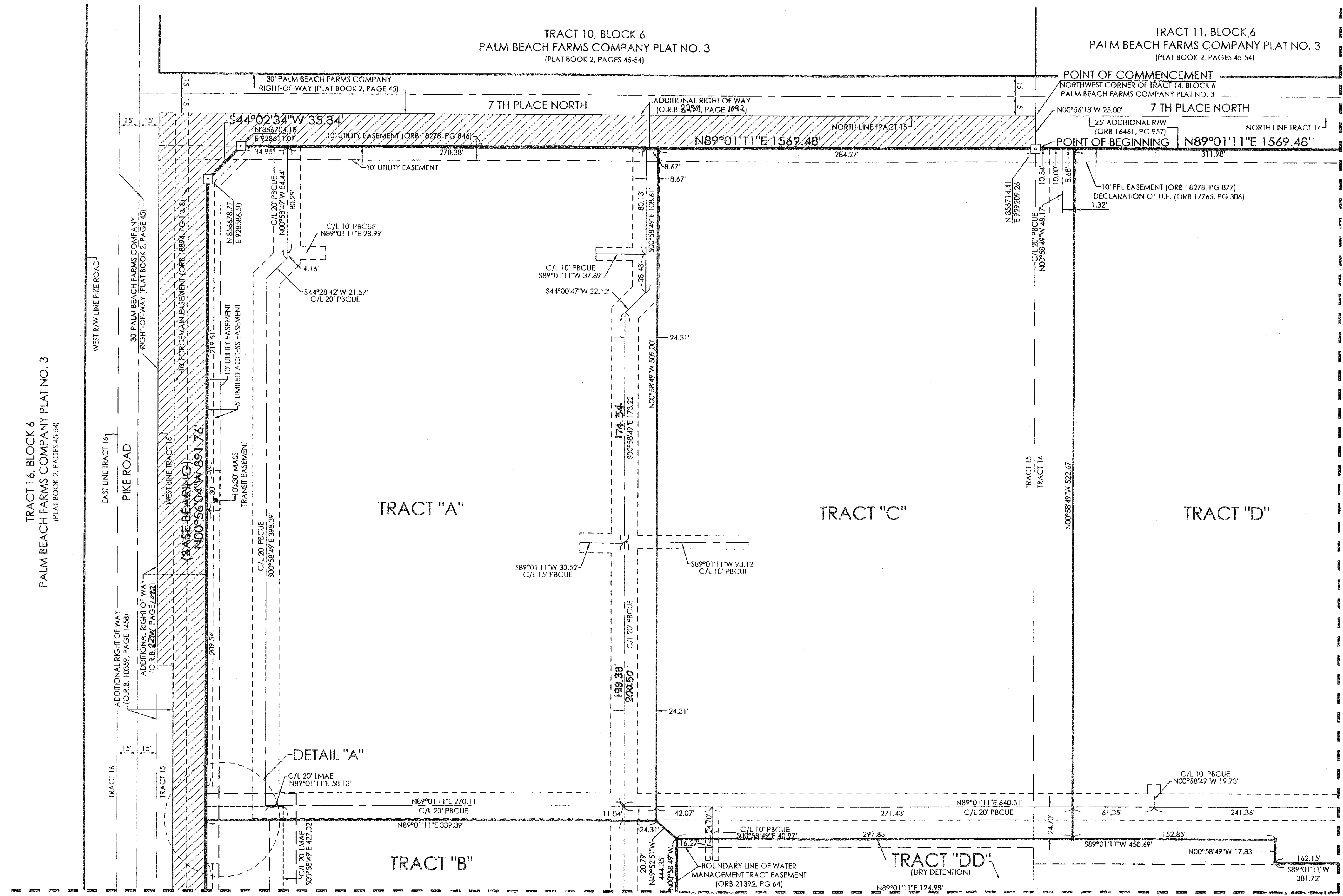
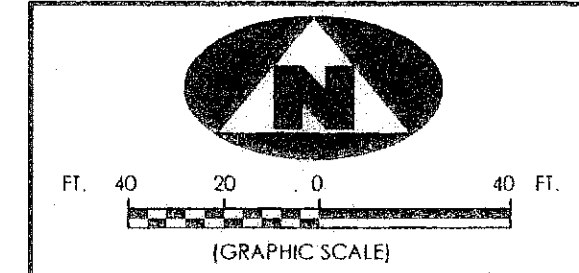


# PROLOGIS PARK WEST PALM BEACH MUPD

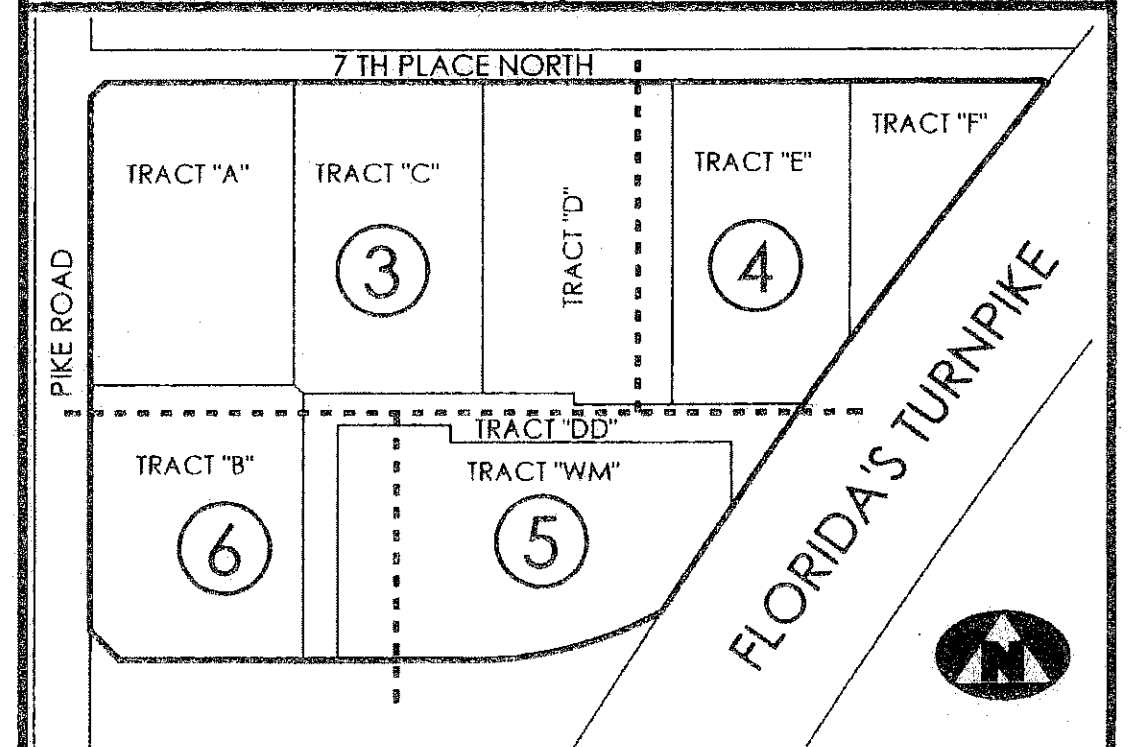
BEING A PART OF TRACTS 14, 15, 22 AND 23, BLOCK 6, LYING NORTH AND WEST OF FLORIDA STATE TURNPIKE RIGHT-OF-WAY, PALM BEACH FARMS COMPANY PLAT NO. 3, RECORDED IN PLAT BOOK 2, PAGE 45, PUBLIC RECORDS, PALM BEACH COUNTY, FLORIDA AND LYING IN SECTION 33, TOWNSHIP 43 SOUTH, RANGE 42 EAST, PALM BEACH COUNTY, FLORIDA



### COORDINATE NOTES AND LEGEND

1. THE COORDINATES SHOWN HEREON ARE STATE PLANE GRID COORDINATES ACCORDING TO THE TRANSVERSE MERCATOR PROJECTION OF THE FLORIDA EAST ZONE, N.A.D. 83, PER THE 1980 ADJUSTMENT.
2. THE LINEAR DIMENSIONS SHOWN HEREON ARE GROUND DISTANCES IN U.S. FEET AND DECIMAL PARTS THEREOF.
3. THE GROUND DISTANCE TO GRID DISTANCE SCALE FACTOR IS 1.000027 (GROUND DISTANCE X SCALE FACTOR = GRID DISTANCE).

### SHEET INDEX (NOT TO SCALE)



LEGEND	
C/L	DENOTES A CENTERLINE
DE	DENOTES DRAINAGE EASEMENT
UE	DENOTES UTILITY EASEMENT
PG	DENOTES PAGE
(RW)	DENOTES RIGHT-OF-WAY
[Symbol]	DENOTES LMAE (LAKE MAINTENANCE ACCESS EASEMENT)
[Symbol]	DENOTES ADDITIONAL RIGHT OF WAY (O.R.B. 2292, PAGE 1092)
R	DENOTES RADIUS DISTANCE
L	DENOTES ARC LENGTH DISTANCE
CA	DENOTES CENTRAL ANGLE
ORB	DENOTES OFFICIAL RECORDS BOOK
[Symbol]	DENOTES A SET PERMANENT REFERENCE MONUMENT (L.B. 7344)
N 855747.52	DENOTES NORTHING COORDINATE
E 929237.58	DENOTES EASTING COORDINATE

### SURVEYOR'S NOTES

1. THE BEARING BASE FOR THIS PLAT IS NORTH 00°56'04" WEST AS SHOWN ALONG THE EAST RIGHT-OF-WAY LINE FOR PIKE ROAD AS RECORDED IN OFFICIAL RECORDS BOOK 2292, PAGE 1092, PALM BEACH COUNTY, FLORIDA.
2. IN THOSE INSTANCES WHERE UTILITY OR DRAINAGE STRUCTURES ARE CONSTRUCTED IN CONFLICT WITH THE PLATTED PERMANENT CONTROL POINT POSITION STRADDLERS MONUMENTED AS PERMANENT CONTROL POINTS WILL BE SET TO REFERENCE THE PLATTED POSITION.
3. THIS INSTRUMENT WAS PREPARED BY WM. R. VAN CAMPEN, P.S.M. NO. 2424, IN AND FOR THE OFFICES OF ASSOCIATED LAND SURVEYORS, INC., 4152 WEST BLUE HERON BOULEVARD, SUITE 121, RIVIERA BEACH, FLORIDA, 33407

FILE: 01-0034PLAT	
FB:	WO NO: 01-0034
SCALE: 1"=40'	DATE: 10-3-2007
DWN: KVC	SHEET 3 OF 6

**ASSOCIATED LAND SURVEYORS, INC.**  
 4152 W. BLUE HERON BOULEVARD-SUITE 121  
 RIVIERA BEACH FLORIDA 33404  
 PHONE: (561) 848-2102 FAX: (561) 844-9659  
 EMAIL: ALLSSURVEY@AOL.COM

FOR MATCH SEE SHEET 4 OF 6

FOR MATCH SEE SHEET 6 OF 6